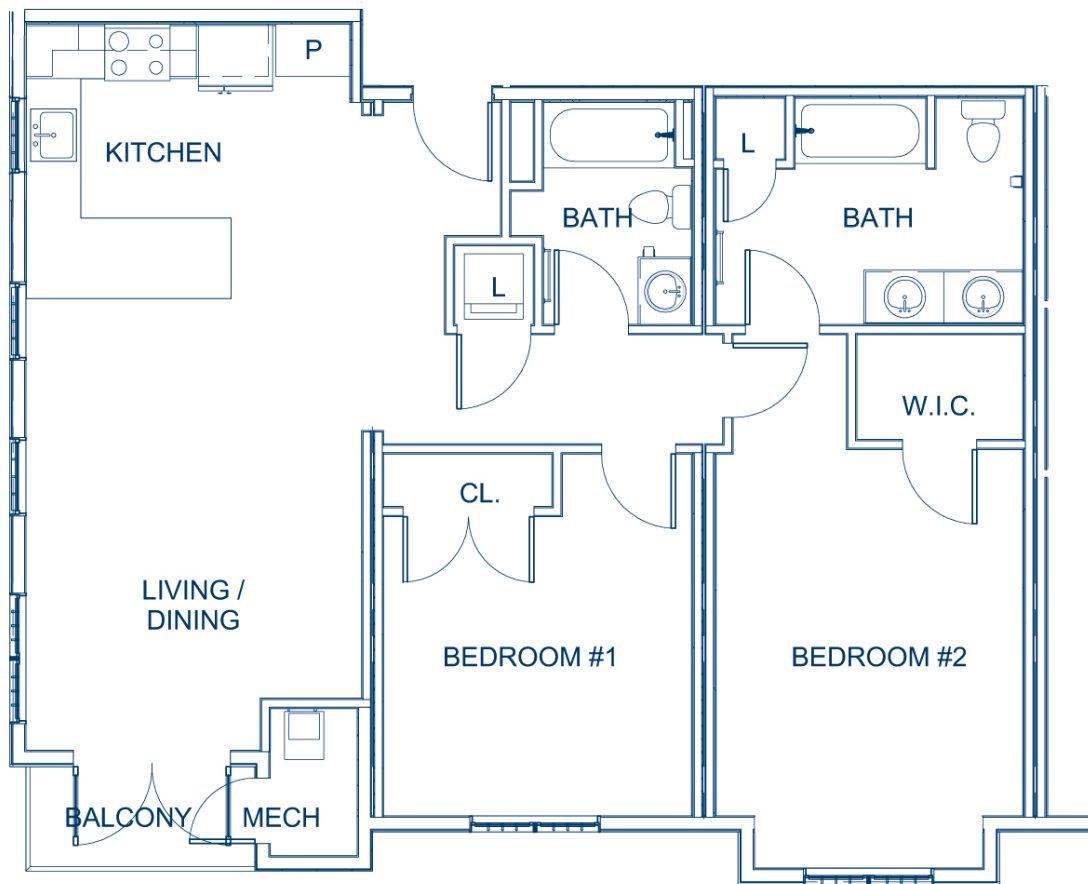




# THE RESIDENCES AT **LINCOLN PARK**

## 2 Bedroom / 2 Bath

+/- 938 - 1,123 sq. ft.



Apartment #: \_\_\_\_\_

Your Favorite Features: \_\_\_\_\_

Available Move-In Date: \_\_\_\_\_

Monthly Rent: \_\_\_\_\_



Floor plans, square footages and other information are gross, estimated, and approximate for illustrative purposes only - configuration, dimensions, and other information are subject to change without notice. (07.12.17)

Professionally Managed  
& Marketed by:

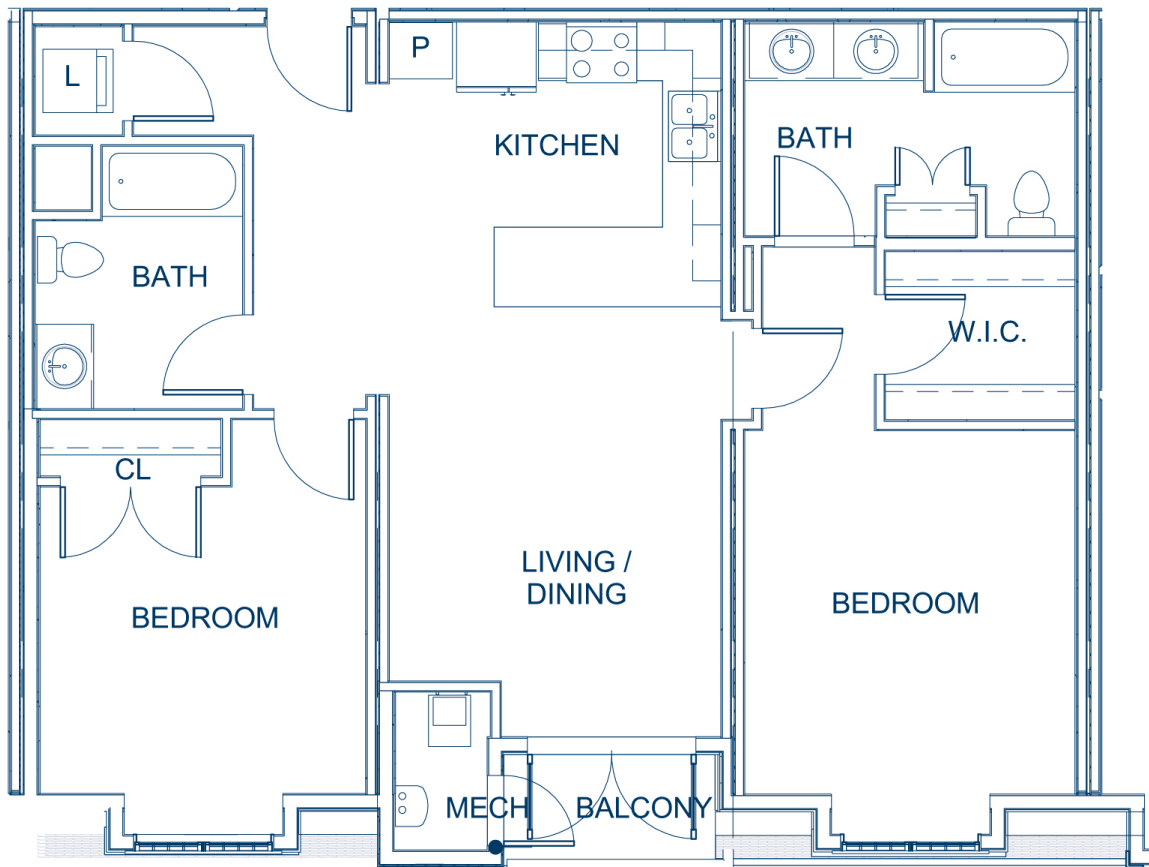




# THE RESIDENCES AT **LINCOLN PARK**

## 2 Bedroom / 2 Bath

+/- 938 - 1,123 sq. ft.



Apartment #: \_\_\_\_\_

Your Favorite Features: \_\_\_\_\_

Available Move-In Date: \_\_\_\_\_

Monthly Rent: \_\_\_\_\_



Floor plans, square footages and other information are gross, estimated, and approximate for illustrative purposes only - configuration, dimensions, and other information are subject to change without notice. (07.12.17)

Professionally Managed  
& Marketed by:

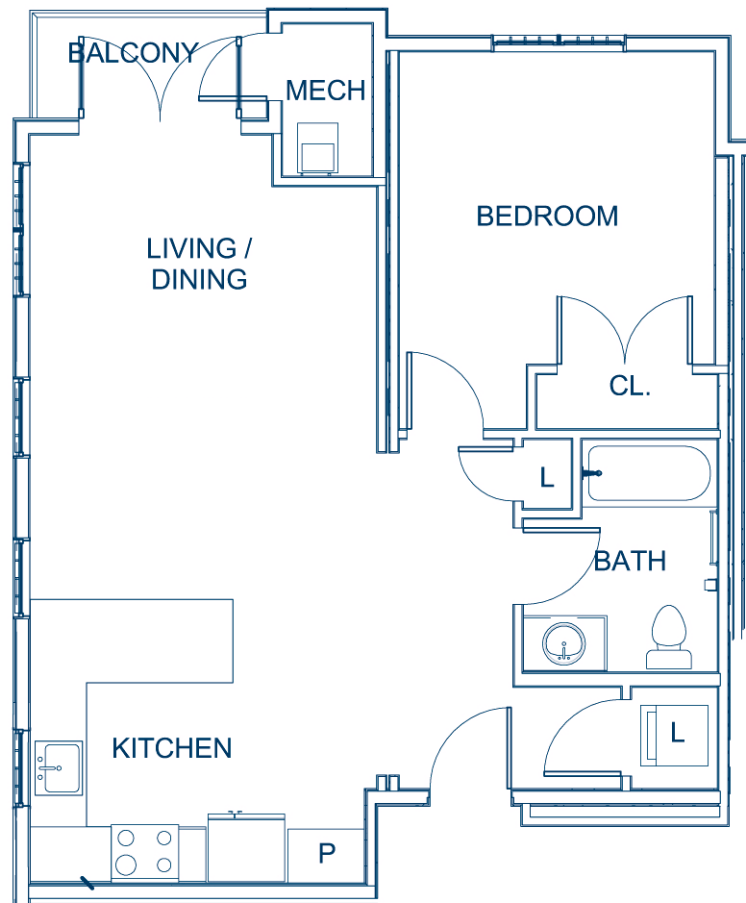




# THE RESIDENCES AT **LINCOLN PARK**

## 1 Bedroom / 1 Bath

+/- 701 - 761 sq. ft.



Apartment #: \_\_\_\_\_

Your Favorite Features: \_\_\_\_\_

Available Move-In Date: \_\_\_\_\_

Monthly Rent: \_\_\_\_\_



Floor plans, square footages and other information are gross, estimated, and approximate for illustrative purposes only - configuration, dimensions, and other information are subject to change without notice. (07.12.17)

Professionally Managed  
& Marketed by:

